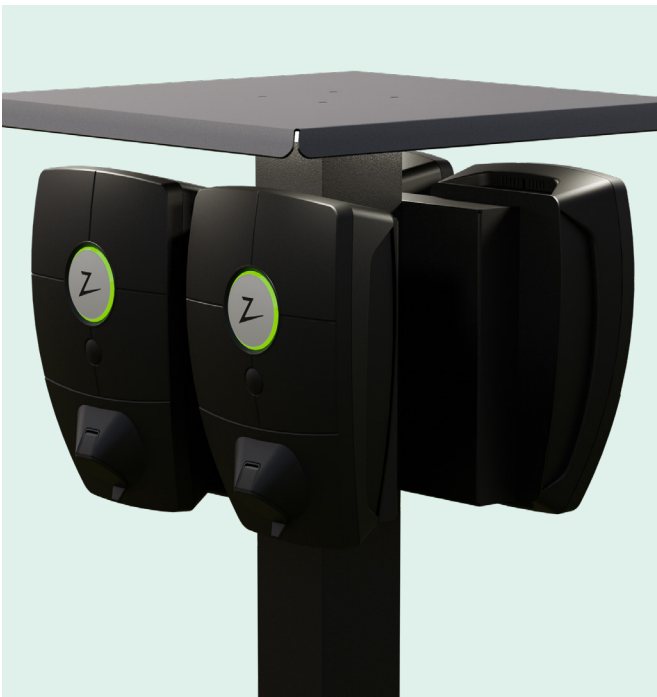


ONEPOLE × Zaptec

# ONEPOLE 2.0

Side by side on both sides - With Lighting

ZB100280



## Includes

- ZB100243** ONEPOLE 2.0 1500 - with footplate CC160
- ZB100249** ONEPOLE 2.0 Roof cover Quad 600
- ZB100251** ONEPOLE 2.0 Bracket for Side by Side installation X2
- ZB100252** ONEPOLE 2.0 Mid cover for Side by side bracket (ZPRO) X2
- ZB100244** ONEPOLE 2.0 Lighting Quattro Including LED unit and Bracket
- ZB100261** ONEPOLE Connection kit 6P





ONEPOLE  
Zaptec



Complete EV  
charging infrastructure



Sustainable  
production



Future  
proof

### Product Information

Zaptec and ONEPOLE is working together to bring forward the best in EV infrastructure. The collaboration brings forward eight readymade pedestals to meet your every EV charging needs. From one charging station up to four per pedestal. Including roof and options for area light.

The ONEPOLE pedestal is made from high quality seawater resistant aluminium. Ready for any environment.

### Maintenance and cleaning

The ONEPOLE products must be cleaned with mild soap water and a damp cloth to avoid scratches.

**NB:** Do not use steel wool, a steel brush, chlorine or harsh cleaning agents in the cleaning process.

### Maintenance interval

In highly polluted areas or close to the sea, the aluminum should be washed at least every 3-6 months.

#### Country of origin

Norway

#### Material

Searesistant aluminum

#### Aluminium

Hydro

#### Measurement

1506x607,5x607,5mm

#### Weight

18,295kg

#### Surface treatment

Powdercoated  
ISO 12944, Category C4

#### Protection class

Class I,  
Must be connected to PE

#### Degree of protection

IK10

#### Color

RAL9005 (Standard)

#### Electrical Connection

Connection point is in the charging stations back plate.  
Connection between pedestals: ONEPOLE Connection kit.

#### Connection

5 pcs. 6x25/50mm<sup>2</sup> Al/CU.

Tested according to EN 60998-1:2004 and EN 60998-2-1:2004

Approved cross-section AL cable: 10-50mm<sup>2</sup>

Approved cross-section CU cable: 1.5-35mm<sup>2</sup>

Made in  
Norway

Ships all  
around Europe

