

DATA SHEET

Art.nr.:
Q9MSP-Z

ONEPOLE LITE 1200 with footplate CC140

Q9MSP-Z

HS-Code: 7610909092

Net Weight

3,9kg

Gross Weight

4,2kg

Net Dimension

1150x178x178mm

Gross Dimensions

1160x180x190mm

Material

Powder-coated searesistant aluminum

Surface Treatment

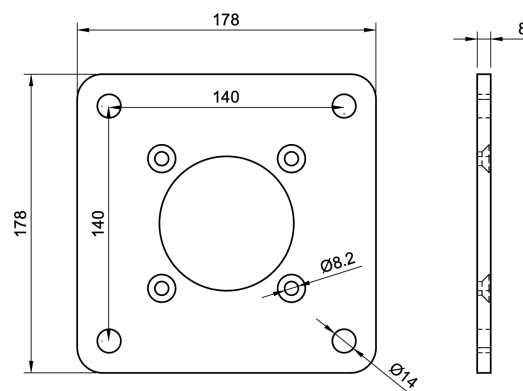
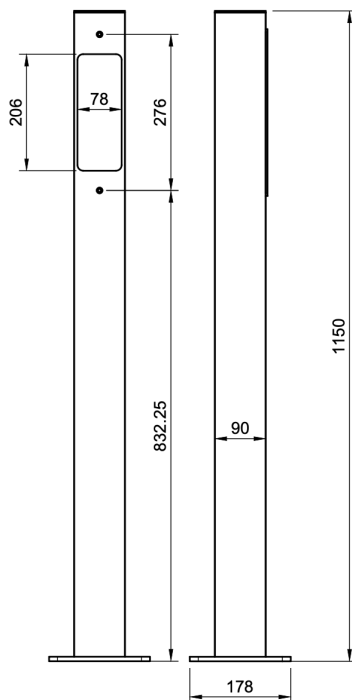
Powdercoated ISO 12944, Category C4

Protection Class

Class I, must be connected to PE

IP Rate

IP44



COMPLETE
EV INFRASTRUCTURE

ONEPOLE

Data sheet | 2025 | www.onepole.no

PRODUCED AND DESIGNED IN NORWAY 