

Zaptec Sense → Installation Guide

Zaptec powers adventure

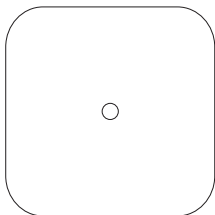
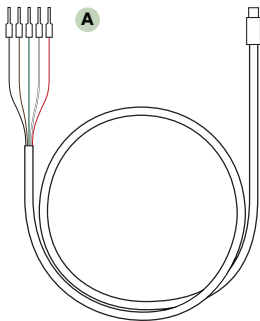


We know that houses and apartment buildings have limited power. This is why we created Zaptec Sense. It helps you utilise your power in the smartest possible way, while also protecting your circuit breakers. Charge as many electric vehicles as possible, as quickly as possible using the power available.

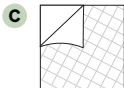
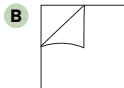
Read this manual in your language →



Included in the package



1 x Zaptec Sense



- A** Custom micro-USB cable
- B** Adhesive magnet sheet
- C** Double-sided tape

Required equipment

- 5 V DC DIN rail power supply with a minimum output current of 1 A
- DIN rail digital energy meter



← Check which energy
meters are supported

Optional equipment

- Unshielded CAT5e/CAT6 Ethernet cable

Important information



Installation may only be performed by an authorised electrician. Additional equipment must be installed according to the installation manual provided by the manufacturer. The Modbus baud rate must be configured to 9.6 kbps.



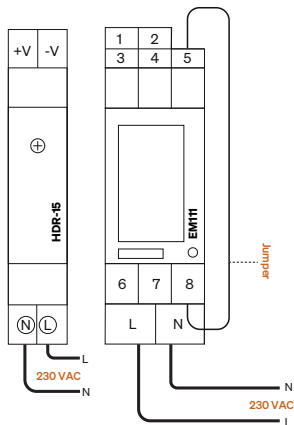
Zaptec Sense supports both Wi-Fi and Ethernet connections. This can be configured in the installation process and in settings afterwards. For Ethernet, connect Ethernet cable to the RJ45 port.



If Zaptec Sense loses internet connectivity or is disconnected, the charging station will be set to provide minimum power (6 A). Minimum power can be changed in the Zaptec Portal.

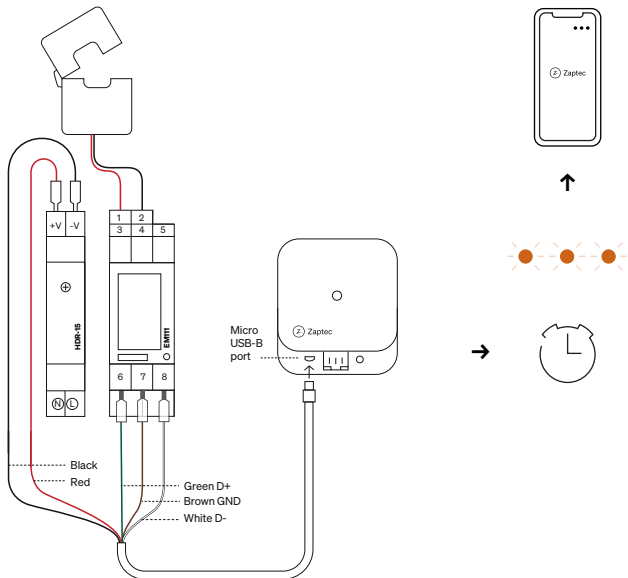
1

EM111 Installation Diagram Power



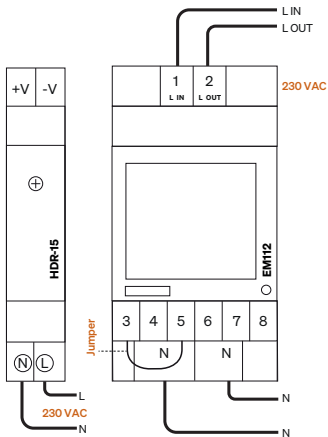
2

EM111 Installation Diagram Communication



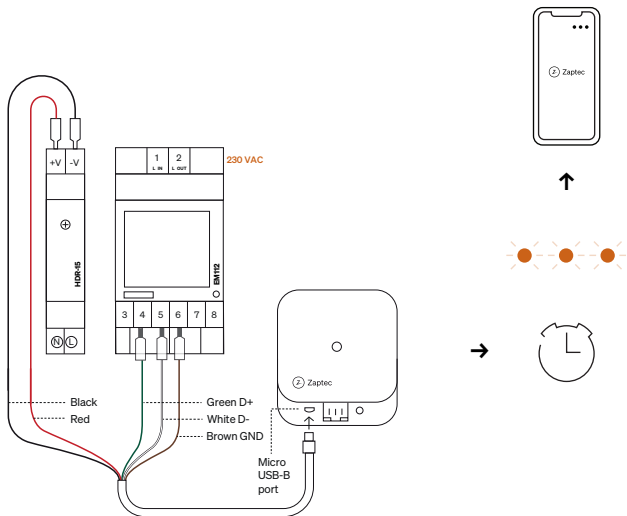
EM112 Installation Diagram

Power



2

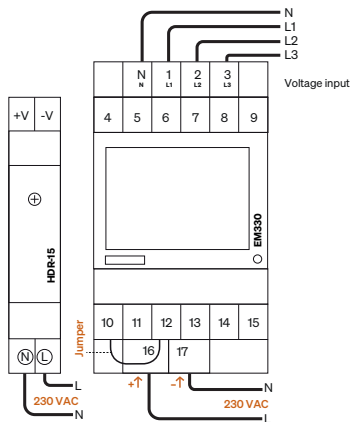
EM112 Installation Diagram Communication



1

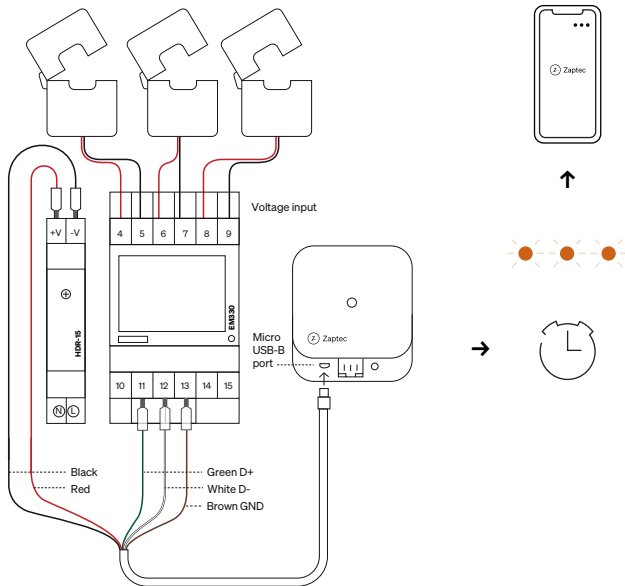
EM330 Installation Diagram

Power



2

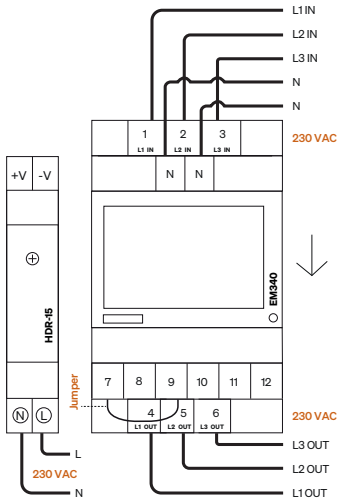
EM330 Installation Diagram Communication



1

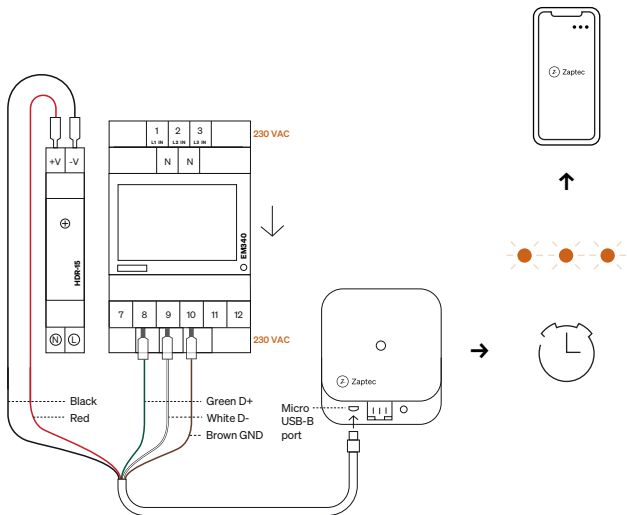
EM340 Installation Diagram

Power



2

EM340 Installation Diagram Communication



Installation

1. Mount and connect Zaptec Sense according to the correct installation diagram above.
2. Download the Zaptec app from App Store or Google Play. Create an account or log in.
3. To install Zaptec Sense, tap the three dots ●●● in the upper right corner of the **Dashboard** screen and select **Install a product**.
4. Under **Choose product**, tap **Zaptec Sense**.
5. Scan the QR-code on the back of Zaptec Sense or this manual. Follow the on-screen instructions.
6. Once the light indicator on Zaptec Sense changes to continuous white, the installation is complete.

Configuration

If you need to change network settings after installation, hold your phone near Zaptec Sense, open the Zaptec app and tap the three dots ●●● to configure Zaptec Sense.

Light indicator



Not configured. No internet connection. Log in via the Zaptec app and set up a Wi-Fi network. For Ethernet: Log in via the Zaptec app to activate Ethernet or check Ethernet cable connection.



No Modbus data received.



No IP received for either Ethernet or Wi-Fi.



IP received, but no contact with the cloud.



Zaptec Sense is configured and active.

Technical specifications

Mechanical and installation

Parameter	Description	Min	Typ	Max	Unit
Dimensions	H: W: D:			58.4 58.6 25.1	mm
Weight	Including Micro USB cable			97	g
Altitude				2000	m
Input cable	Custom Micro USB-B cable (Power supply + RS485)		1.8		m
	Unshielded CAT5e/CAT6 cable			30	m

Zaptec Sense is designed for indoor use.

General

Parameter	Min	Typ	Max	Unit
Rated voltage	4.5	5	5.5	VDC
Rated current	200		750	mA
Standby power consumption			1.5	W
Ambient operating temperature	-20		40	°C

Connectivity

Protocol	Supported standards
Wi-Fi	IEEE 802.11b/g/n (2.4 GHz)
Bluetooth	Bluetooth V4.2 (BLE)
Ethernet	ISO/IEEE 802.3u/az(10/100 Mb/s)
Modbus	9.6 kb/s

Guarantee

Your Zaptec product comes with a five (5) year guarantee at no additional cost. Please find the guarantee document at **zaptec.com/guarantee**

Zaptec Charger AS
Vassbotnen 1
4313 Sandnes
Norway

Made in Norway



zaptec.com

© Zaptec Charger AS 25.11.2025 All rights reserved. MA-00010-E1