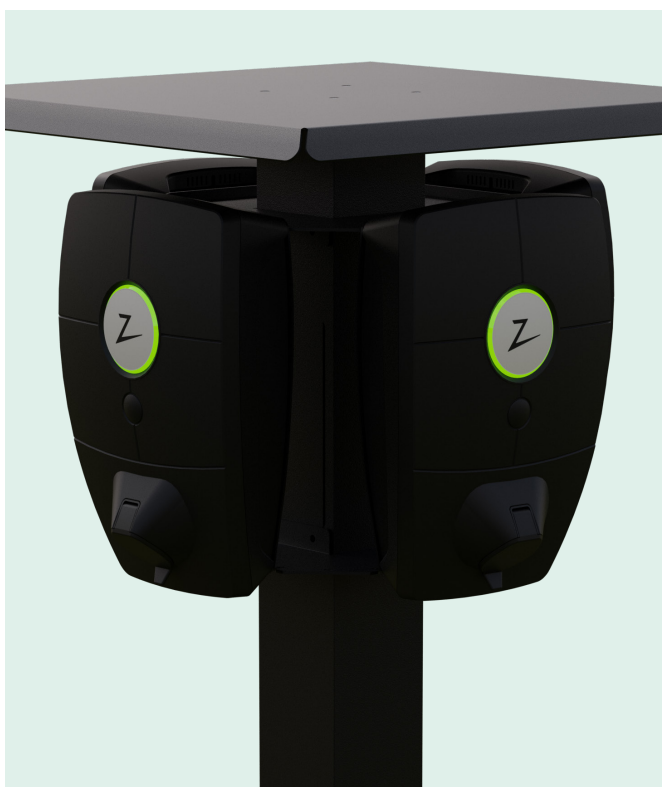


ONEPOLE × Zaptec

ONEPOLE 2.0

Quattro

ZB100275



Includes

- ZB100243 ONEPOLE 2.0 1500 - with footplate CC160
- ZB100249 ONEPOLE 2.0 Roof cover Quad 600
- ZB100246 ONEPOLE 2.0 Quattro Bracket
- ZB100247 ONEPOLE 2.0 Walls for Quattro installation (ZPRO)
- ZB100261 ONEPOLE Connection kit 6P



ONEPOLE
Zaptec



Complete EV
charging infrastructure



Sustainable
production



Future
proof

Product Information

Zaptec and ONEPOLE is working together to bring forward the best in EV infrastructure. The collaboration brings forward eight readymade pedestals to meet your every EV charging needs. From one charging station up to four per pedestal. Including roof and options for area light.

The ONEPOLE pedestal is made from high quality seawater resistant aluminium. Ready for any environment.

Maintenance and cleaning

The ONEPOLE products must be cleaned with mild soap water and a damp cloth to avoid scratches.

NB: Do not use steel wool, a steel brush, chlorine or harsh cleaning agents in the cleaning process.

Maintenance interval

In highly polluted areas or close to the sea, the aluminum should be washed at least every 3-6 months.

Country of origin

Norway

Material

Searesistant aluminum

Aluminium

Hydro

Measurement

1497x607,5x607,5mm

Weight

13,45kg

Surface treatment

Powdercoated
ISO 12944, Category C4

Protection class

Class I,
Must be connected to PE

Degree of protection

IK10

Color

RAL9005 (Standard)

Electrical Connection

Connection point is in the charging stations back plate.
Connection between pedestals: ONEPOLE Connection kit.

Connection

5 pcs. 6x25/50mm² Al/CU.

Tested according to EN 60998-1:2004 and EN 60998-2-1:2004

Approved cross-section AL cable: 10-50mm²

Approved cross-section CU cable: 1.5-35mm²

Made in
Norway

Ships all
around Europe

